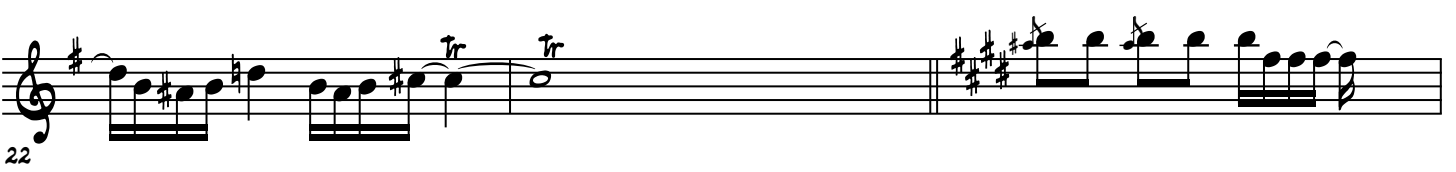
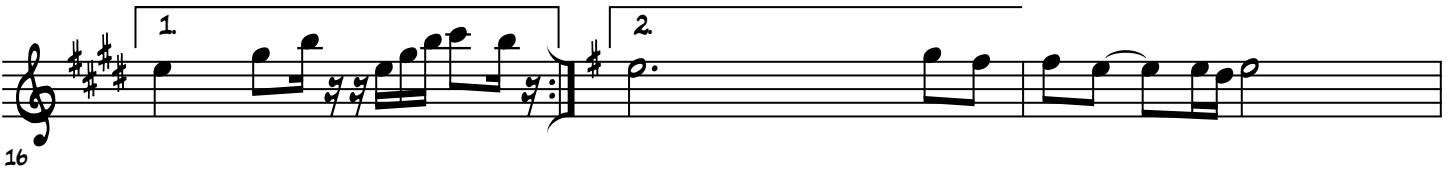
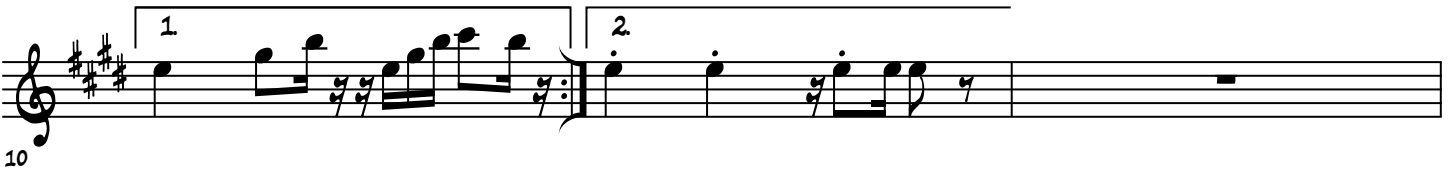
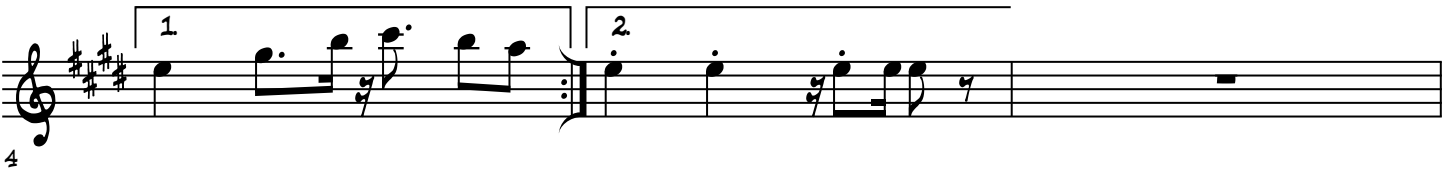


ALTO SAX

LAPIZ HERMANOS ROSARIO

COMPOSER
ARRANGER



LAPIZ HERMANOS ROSARIO

A single staff of music in treble clef, key signature of three sharps (F#, C#, G#), and 2/4 time signature. The notation begins with a treble clef and a key signature signature. The first measure contains a quarter note G4, a quarter note A4, and a quarter note B4. The second measure contains a quarter note C5, a quarter note B4, and a quarter note A4. The third measure contains a quarter note G4, a quarter note F4, and a quarter note E4. The fourth measure contains a quarter note D4, a quarter note C4, and a quarter note B3. The fifth measure contains a quarter note A3, a quarter note G3, and a quarter note F3. The sixth measure contains a quarter note E3, a quarter note D3, and a quarter note C3. The seventh measure contains a quarter note B2, a quarter note A2, and a quarter note G2. The eighth measure contains a quarter note F2, a quarter note E2, and a quarter note D2. The ninth measure contains a quarter note C2, a quarter note B1, and a quarter note A1. The tenth measure contains a quarter note G1, a quarter note F1, and a quarter note E1. The piece concludes with a double bar line and repeat dots.